

# International Tournament of Young Mathematicians 2018

Animath

## Presentation



# 1 Program

## 1.1 Timetable

Participants, team leaders and jury members are expected to :

- arrive on Thursday 5<sup>th</sup> in the afternoon (dinner is included for everyone)
- depart on Wednesday 12<sup>th</sup> in the morning (breakfast is included for everyone)

	Friday 6 <sup>th</sup>	Saturday 7 <sup>th</sup>	Sunday 8 <sup>th</sup>	Monday 9 <sup>th</sup>	Tuesday 10 <sup>th</sup>	Wednesday 11 <sup>th</sup>
Morning	Quizz	Team Work		Excursion	Team work	Finals
	Opening ceremony		Round 2			
Lunch	Lunch				Lunch	
Arternoon	Round 1	Team Work	Round 2		Team work	Visit
			Sports			Closing ceremony
Dinner	Dinner				Dinner	
	Draws	Social event	Draws		Social event	

TABLE 1 – Program from July 6<sup>th</sup> to July 11<sup>th</sup>

## 2 Organizers and sponsors

### Organizers

#### Animath



Animath is a French non-profit organization founded in 1998. Its goal is to promote the practice of mathematics for young people, from elementary school to university.

Animath has a long history of organizing mathematical competitions and summer camps, at national and international level. The association is supported by the main research and teaching organizations involved in mathematics and computer science and is accredited by the Ministry for Education as an “educational association, complementary to the public educational system”.

Most members of the Local Organizing Committee are former participants. They will benefit from 8 years of experience of organizing the French national tournament (TFJM2). Their work is purely voluntary.

### Partners

#### École Normale supérieure

At the same time a French grande école and a university, the Ecole normale supérieure provides in Paris, at the heart of the Quartier latin, excellent training through research, leading to various teaching and research professions, and contributes to train through research the senior executives of public administrations as well as of French and European companies. The ENS also defines and applies scientific and technological research policies, from a multidisciplinary and international perspective.

Intellectual freedom, multidisciplinary in humanities and sciences, individual attention to students, bountiful campus life, gathering students and professors from all disciplines, form the heart of the specificities of the Ecole normale supérieure. Since more than 2 centuries, the ENS prepares its students to the most various openings and the highest responsibilities, while being fully invested in the intellectual, scientific and cultural debates of its time – in particular through the multiplicity of the normaliens’ engagement.



## École des Ponts ParisTech



**École des Ponts**  
ParisTech

École des Ponts ParisTech, created in 1747 under the name École Royale des Ponts et Chaussées, is a higher education establishment that trains engineers to a high level of scientific, technical and general competency. Apart from civil engineering and spatial planning, historically the source of its prestige, the School develops high-quality programs and research associated with the energy transition.

École des Ponts ParisTech provides a very high-level education in general engineering. The Graduate School, underpinned by the excellence of its 12 research labs, develops Masters and PhD programs in mechanical and civil engineering, materials sciences, nuclear engineering, mathematics, information technology, environmental sciences, urban planning, transportation, economics, and sociology.

Through its subsidiaries or in its own right, it develops initial education and lifelong learning that are closely connected with different sectors of the economy. It is therefore a key player in lifelong learning for senior executives in its prime disciplines.

## Sponsors

### Société Générale

Societe Generale is one of the leading financial services groups in Europe. Based on a diversified universal banking model, the Group combines financial solidity and a strategy of sustainable growth. Our objective : to be the leading relationship-focused bank, a reference in its markets, close to its clients and chosen for the quality and commitment of its teams.

Today, data is central to customer relations and the Societe Generale Group organisation. In a digital environment, the Bank improves its services to its clients, its risk management, and its operational efficiency, thanks to data use while ensuring its quality, security and protection.

The Dunes technology hub (where the finals will take place), located in Fontenay-sous-Bois, just east of Paris, is an illustration of the digital adventure Societe Generale and its staff have embarked upon in recent years. This innovative site, which welcomed its first occupants in September 2016, is where the majority of the Bank's IT teams are based.



**SOCIETE  
GENERALE**



### 3 Key locations

#### 3.1 Tournament locations

##### 3.1.1 Quizz and round 1 : École normale supérieure (Jourdan)

First day will take place at École normale supérieure (ENS), campus Jourdan. The campus has recently opened its doors, being shared with Paris School of Economics. Participants will thus be able to explore a research-driven environment.

	Schedule
Quizz	8 : 30 - 10 : 30
Opening ceremony	11 : 00 - 12 : 30
Lunch	13 : 00 - 14 : 00
Round 1	14 : 30 - 18 : 30



FIGURE 1 – ENS campus Jourdan

Rounds will take place in rooms accomodating up to 50 people, whereas breaks will take place in specific areas. The opening ceremony will be held in an auditorium where the opening speech and a maths presentation will be delivered. Participants and jury members will have lunch outside if weather allows it.

##### 3.1.2 Working rooms : École normale supérieure (Jourdan)

On day 2 and 5, teams will work solely on their presentations. Each team will have their own room to work. The jury will also have 2 rooms to work. The schedule of these days is fixed but slightly flexible to adapt to each team’s needs.

	Schedule
Arrival	8 : 00 - 9 : 30
Lunch	12 : 30 - 13 : 30
Departure	18 : 00 - 19 : 00

Each room is equipped with a white board, a projector and at leats 15 seats. Participants and jury members will lunch outside if the weather is favourable. ENS is a research center, thus the environment is ideal for such a research work made by teams.



FIGURE 2 – Room for presentations and auditorium



FIGURE 3 – ENS campus Jourdan

### 3.1.3 Round 2 & sports : École des Ponts ParisTech

Round 2 will take place at École des Ponts ParisTech, located close to Paris. The campus offers three sports facilities which will be used for the sports session.

	Schedule
Round 2 (part 1)	9 : 00 - 12 : 00
Lunch	12 : 30 - 13 : 30
Round 2 (part 2)	13 : 30 - 14 : 30
Conference and sports repartition	14 : 30 - 15 : 30
Sports	15 : 30 - 17 : 00

Same as before, rooms will be provided for rounds and areas organized for breaks. From 2 : 30 am to 3 : 30 am, a presentation of the school will be delivered in the auditorium and the participants will choose the sport they want to play. Participants and jury members will lunch outside if weather allows it.



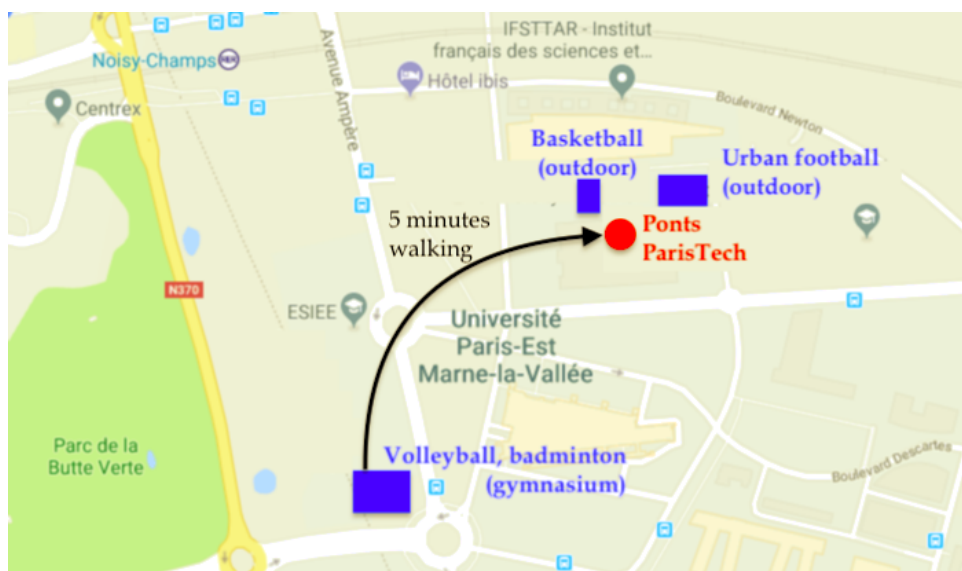


FIGURE 4 – Ponts ParisTech campus Descartes



FIGURE 5 – Room for presentations ; gymnasium

### 3.1.4 Finals : Société Générale - Les Dunes (Val de Fontenay)

Finals will take place at the scientific center of the bank Société Générale, Les Dunes, located near Paris. The grand final will take place in the auditorium and the small one in a normal room. Breaks will be organized for the teams and the jury.

Schedule	
Finals	8 : 30 - 13 : 00
Lunch	13 : 00 - 14 : 30
Math conference	14 : 30 - 15 : 30
Sponsor's presentation	15 : 30 - 16 : 30
Closing ceremony	16 : 30 - 18 : 00
Cocktail	18 : 00 - 19 : 30

After lunch, a maths conference lasting 40 minutes will be delivered. Société Générale will also give a presentation about mathematics useful to a bank. Awards will be distributed by scientists and dignitaries of our partners.

Two breaks are planned in the afternoon. The closing reception will allow participants to network with the jury and professionnels of Société Générale in order to learn more about pos-

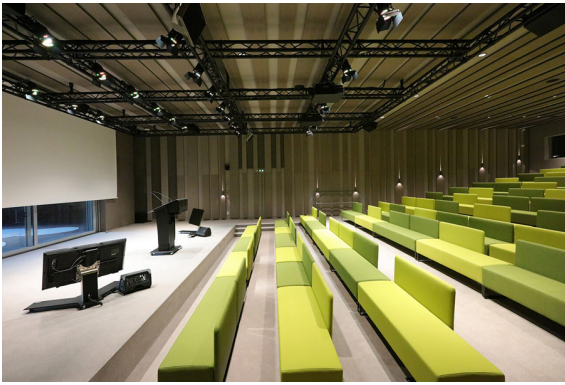


FIGURE 6 – Auditorium for the final and ceremony

sible careers in mathematics. This is the perfect occasion to exchange contacts and learn from one another.



FIGURE 7 – Room for small final; resting area



### 3.2 Housing for participants and team leaders (FIAP)

Students and team leaders will be staying at the youth hostel, FIAP Jean Monnet. There is a high level of satisfaction with this hostel as it has been previously used for Animath events. The rooms are en-suite, not mixed and will accomodate 4 to 7 students.

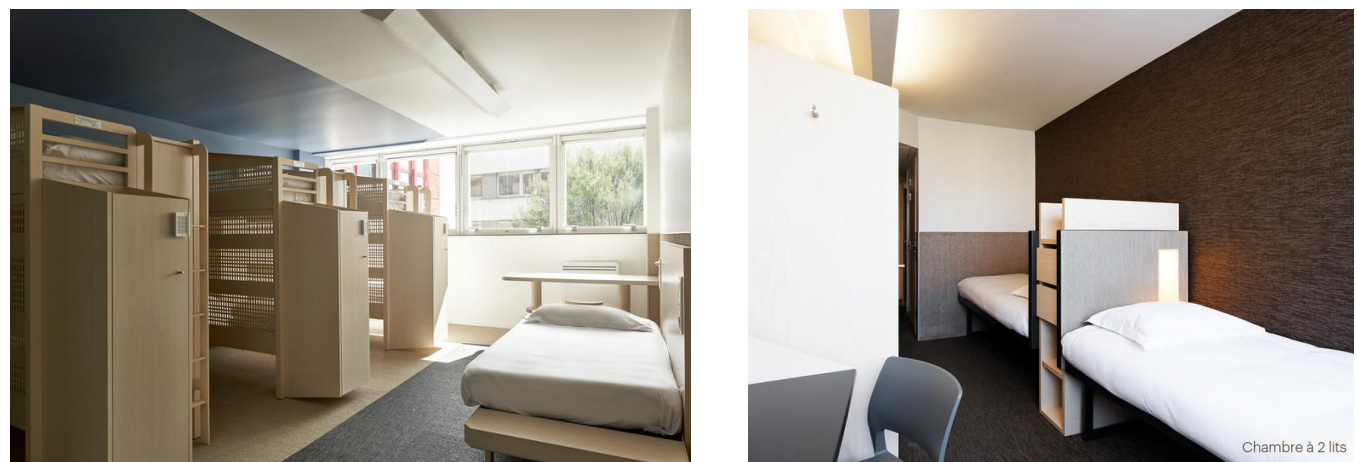
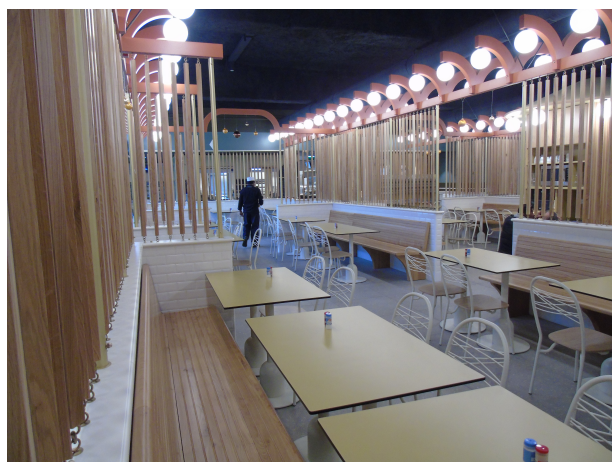


FIGURE 8 – Room for participants (left) and for team leaders (right)

Team leaders, only, will be accomodated in rooms of two. Each team leader room is equipped with a desk and is close to the rooms of the participants. This proximity will facilitate evening work sessions if desired. Open workspaces are also available.

Some organizers will also be hosted in the same youth hostel, thus they can ensure the managing mission and provide support to any participant or team leader who might need some.



Restaurant for participants and team leaders  
(breakfast and dinner)

Dinner and breakfast will be served in the hostel’s restaurant, except for the final dinner which will take place at Société Générale. Breakfast includes a variety of choices in order to suit everyone’s taste.

Schedule	
Breakfast	7 : 00 - 9 : 00
Dinner	18 : 30 - 20 : 30

### 3.3 Housing for jury members (Hotel)

Jury members will be staying at a hotel in the 14<sup>th</sup> borough of Paris. Close to ENS campus Jourdan (where working rooms are to be found), it is an ideal location. The hotel is situated around one hour away by public transport from Charles de Gaulle airport.



FIGURE 9 – Room for jury members

Breakfast will be served in the hotel's restaurant between 7am and 10am. Dinner will, however, take place at a restaurant in between the hotel and ENS.



FIGURE 10 – Breakfast room for jury members